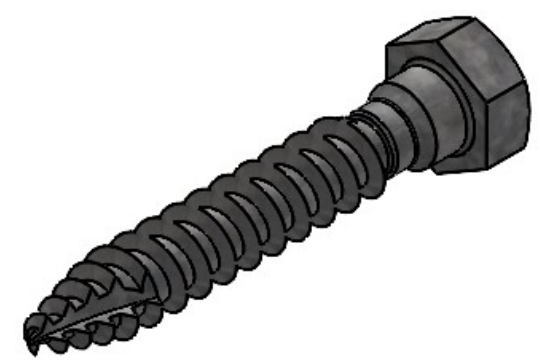
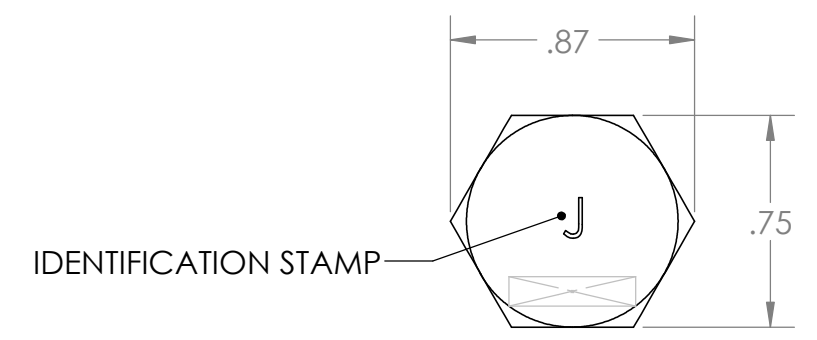
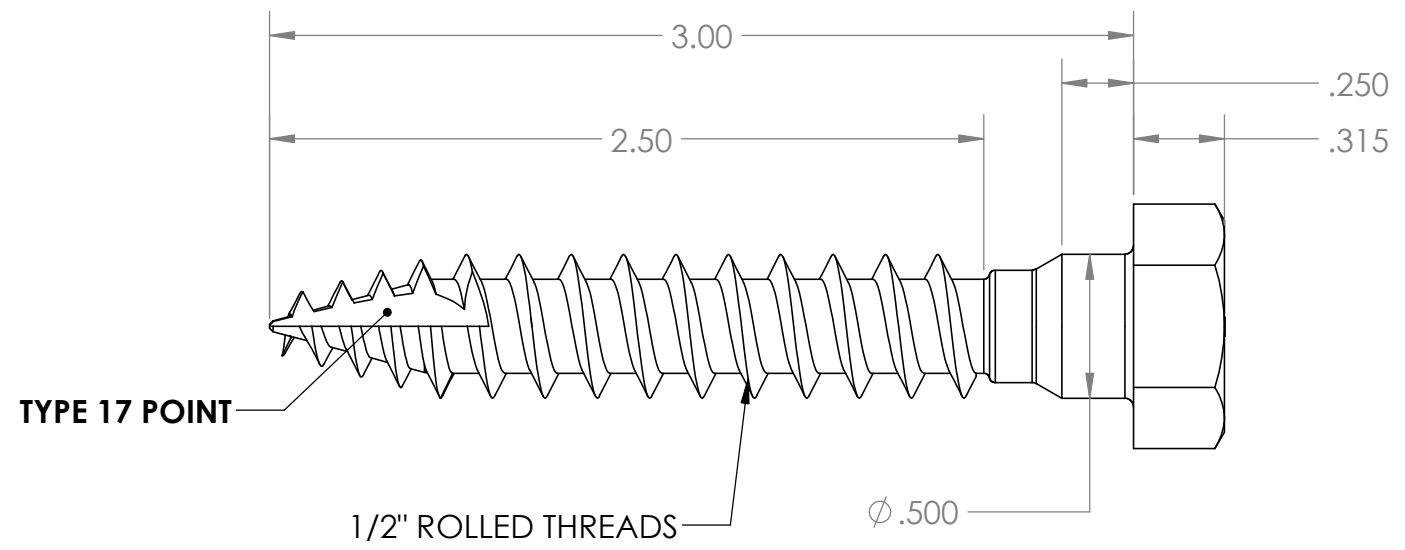


PAPER SIZE		DRAWING NUMBER		
B		GD-J8753FX		
REVISIONS				
ZONE	REV.	REVISED BY:	REVISION DATE:	ECO #
	A	JRK	11/6/2023	13105



NOTES:

1. MATERIAL: HR CARBON STEEL
2. ALL DIMENSIONS ARE REFERENCE AND IN INCHES.
3. SCREWS TO BE HOT DIP GALVANIZED PER ASTM A-153.

This drawing contains confidential information that is the property of MacLean Power, L.L.C. ("MacLean"). Use of MacLean's confidential information without MacLean's express written consent is strictly prohibited and may expose you to legal liability. If you believe that you received this material in error, please destroy it or return it to "MacLean Power, L.L.C., 11411 Addison Street, Franklin Park, Illinois 60131, USA."

UNLESS OTHERWISE SPECIFIED DIMENSIONS ARE IN:	
INCHES	
TOLERANCES ARE:	
.XX	-----
.XXX	-----
X/XX	-----
ANGLES	-----

MacLean
POWER SYSTEMS

WWW.MACLEANPOWER.COM

DRAWING NUMBER:		GD-J8753FX		DO NOT SCALE DRAWING	
SHEET NAME:		Sheet1		CAD GENERATED DRAWING DO NOT MANUALLY UPDATE	
DRAWING DESCRIPTION:		LAG SCREW - FAST LAG, 1/2", TYPE 17 PT		DESIGN DATE: 8/16/2024	
DRAWING SCALE: 1.5:1		CATALOG NO.: J8753FX		DRAWN BY: JRK	
				ENGINEER: JRK	
				APPROVED: XXX	
				REVISION: A	